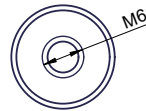


Door stopper PU-590



Bohrbild | drilling pattern



Door stopper, stainless steel

Door stopper for wall mounting. Stainless steel. Surface with fine brushed structure. With solid bumper. The screw has a male threaded portion that mates with a threaded hole in the rear of the hook for a concealed mounting system. Can be glued with Loctite for secure fixing, if required.